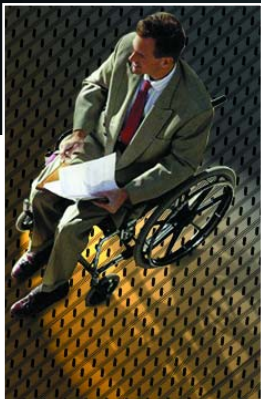


ALPLANK - diagonal punch aluminum plank

take a closer look at **Pedestrian Access**

...Unique 45° punch design allows a variety of ADA compliant applications



- ✓ **Crosswalks, Marine Applications**
- ✓ **Handicapped Accessible Locations**
- ✓ **Pedestrian Walkways, Entranceways**

ADA

Americans with Disabilities Act

*With ADA approval you know
it's designed to perform!*

A whole new slant on a "grate" design

Exclusive
PRODUCT
Only from Ohio Gratings

Get a whole new "slant" on ADA accessibility. Our unique diagonal punch design is ADA compliant, in multiple directions of travel, and exceeds ADA standards. **ALPLANK diagonal punch aluminum plank** ...is an excellent long term solution for all types of pedestrian walkways.

We offer a "grate" esthetic alternative to traditional close mesh bar grating. Our brand new, rather unique, **ALPLANK** makes terrific flooring and is economically priced, compared to other products in the marketplace.

ALPLANK offers durability, corrosion resistance, effective drainage capability, excellent strength, yet lightweight characteristics.

With plank depths of 3/4" to 2-1/2" in stock, we can ship quickly in 6" wide (or wider) units for quick and easy installation. This type of flexibility offers more design options for you. We can conveniently ship directly to your job sight. Choose from two basic design options (illustrated on the back).

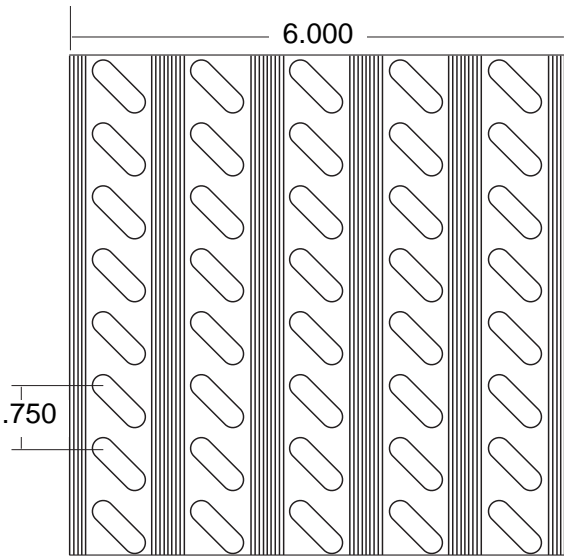
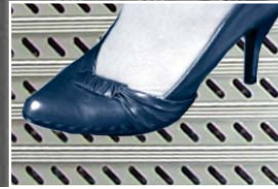
Whether you need a pedestrian walkway, building entranceway or marine dock application;
...get a whole new slant on a "grate" design.

ALPLANK products are available with extra slip resistant surfaces.

ALPLANK is the ideal alternative to T-bar and other ADA products on the market today.



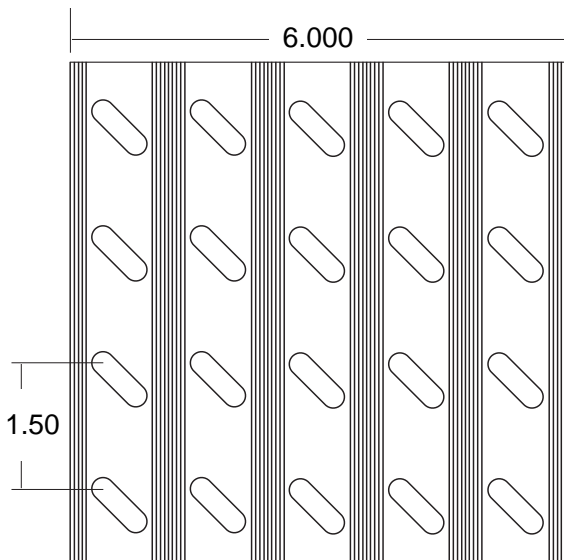
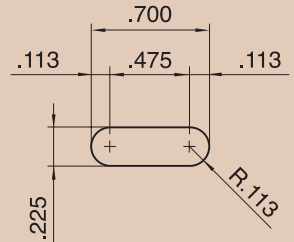
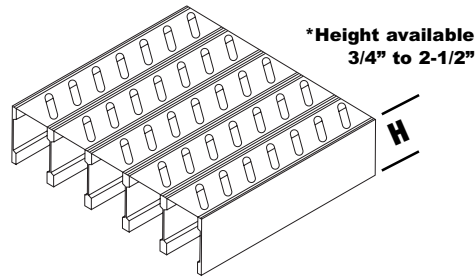
Unique 45° angle
...punched lightweight aluminum
plank exceeds lofty ADA standards



ALPLANK 15

... designed for 15% open area.

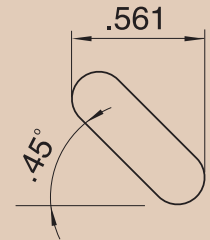
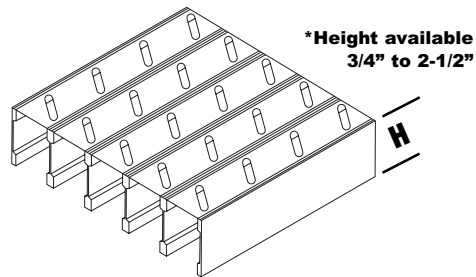
This is accomplished by punching the plank panel with a special size slotted diagonal tool (see diagram to the right) .225" x .700" on 3/4" centers.



ALPLANK 8

... designed for 8% open area.

This is accomplished by using the same diagonal tooling on 1-1/2" centers.



*** Height of product based on load requirements**



5299 Southway S.W. • Canton, Ohio 44706 • 330-477-6707

Fax: 330-477-7872 • Toll Free: 800-321-9800

Visit us on the Web at: www.ohiogratings.com

©Ohio Gratings 2003 • printed 9/08/03 • Tree-BP • 5k