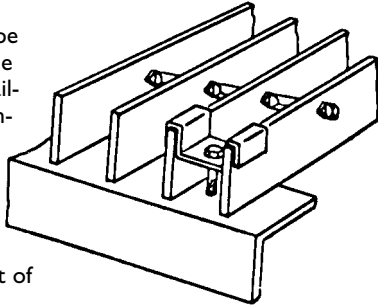


ANCHORING DEVICES

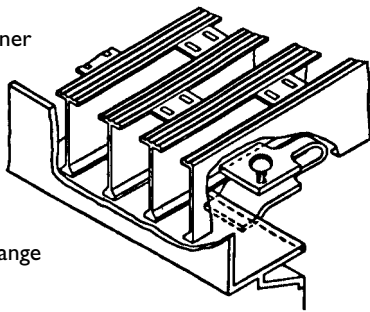
SADDLE CLIP

A special bent-clip type fastener for removable bar grating panels, available in aluminum, stainless steel and galvanized steel. (Note: Cross bars may need to be snipped in the field to facilitate placement of saddle clips.)



PLANK CLIP

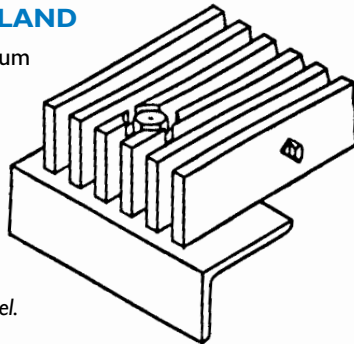
A special friction fastener used in conjunction with plank grating and embedded grating frames. When plank is banded, clips are installed by the manufacturer. Compatible with 1/4" flange thickness.



COUNTERSUNK LAND

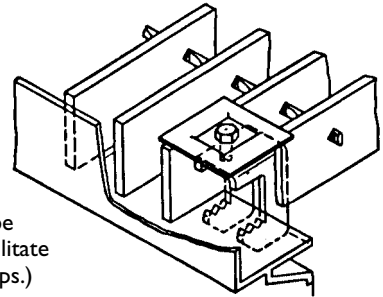
For close-mesh aluminum grating (7/16" or 11/16" bearing bar centers), a countersunk land may be drilled by the grating manufacturer for use with a 1/4" diameter TEK screw.

Note: Available for aluminum grating and steel.



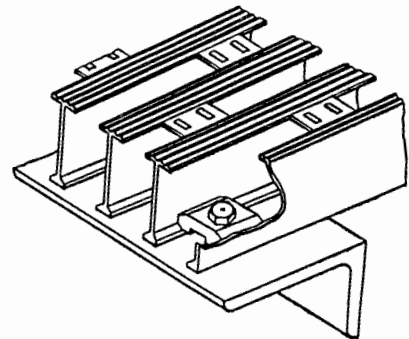
GRATING CLAMP

A special friction fastener available in aluminum, stainless steel, and galvanized steel used in conjunction with bar grating and embedded grating frames. (Note: Cross bars may need to be snipped in the field to facilitate placement of grating clamps.)



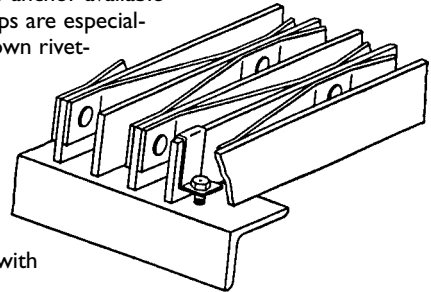
PLANK LUG

A plank lug inserted and tack welded between flanges, can serve as an anchor for plank grating.



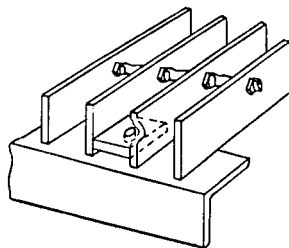
Z CLIP

The most versatile clip anchor available is the Z Clip. These clips are especially helpful in holding down riveted grating. Z Clips are manufactured from stainless steel and are available in 1" (1" and 1 1/4" grating), 1 1/2" (1 1/2" and 1 3/4" grating), and 2" (2", 2 1/4" and 2 1/2" grating) with a pre-punched hole to accept a 1/4" bolt or TEK screw.

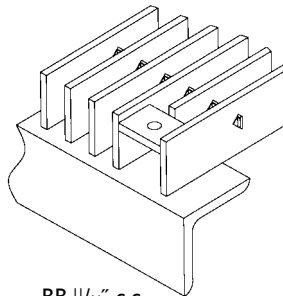


ANCHOR BLOCK

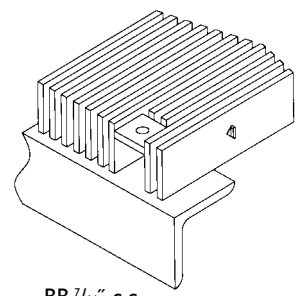
Anchor blocks of 1/4" or 3/16" thick aluminum or steel may be shop welded by the grating manufacturer and used to fasten permanent or removable grating panels. Anchor blocks are recessed thus offering a trip-free surface.



BB 15/16" c.c. or greater



BB 11/16" c.c.



BB 7/16" c.c.

Note: For ADA compliant spacings, the lug will typically be installed at the top.

Tack welding of grating in the field (by others) is also a positive method for anchoring all permanently installed grating.