



# GRATE NEWS

ARCHITECTURAL & INDUSTRIAL DESIGNS FROM OGI

## IN THIS ISSUE

- ▶ **Featured Product pg. 2**  
Green Products and OGI's involvement on the ASLA's Headquarters Green Roof project
- ▶ **Kwik Facts pg. 2**  
A few facts about OGI's Green Products
- ▶ **Case Study pg. 3**  
High Line Park Phases I & II: An Overview of the past, present and future.
- ▶ **Designer Showcase pg. 4**  
OGi offers Sunshades components and full systems



Follow us on Twitter!



See us on YouTube!

## ANNOUNCEMENTS

### Tradeshaw Schedule

#### GlassBuild America – National Glass Association

Atlanta, GA • September 12-14  
Booth 2413

#### Texas Society of Architects

Dallas, TX • October 27-28  
Booth 401

#### ASLA – American Society of Landscape Architects

San Diego, CA • October 31 - November 1  
Booth 2812

## Going Green

Over the last decade the construction industry has made great strides in preserving the environment by focusing on “green products”. These products help to reduce the “footprint” impact on the U.S. landscape by using products with high recycled content. OGI has made a conscious effort to do our part in this initiative. All of our manufactured products are produced with a significant portion of recycled content, our scrap metal is sold to recyclers so it can be used again, we added an in-house powder coat line and thereby shut down our wet paint process eliminating paint fumes which impact the atmosphere and even use FSC certified (recycled) paper for our much of our print media.

The U.S. Green Building Council (USGBC) developed a “green” building certification system in 2000 called LEED (Leadership in Energy and Environmental Design) which has helped to drive the above initiative. It is intended to provide a structure for identifying and executing realistic and measurable green building

design solutions, construction methods, as well as operations and maintenance solutions. LEED measures green building in a variety of key areas ranging from sustainable site development to material selection and innovation in design. Building lifecycles are also rated from design through construction and into the maintenance and operations phase.

OGi's product lines are very versatile, and offer many innovative solutions to projects that specify traditional products. These products are often chosen by architects and engineers for their modern designs and aesthetic appeal. In addition, aluminum, carbon and stainless steel are all recyclable metals, and can



◀ Leon Medical Center, Miami FL, used aluminum louver as a sunshade to reduce solar glare and cooling costs.

be “reused” after their current lifecycle. Many of our products qualify for LEED points. See our website for more details.

### Green Roofs

Green Roof applications began appearing as early as 1914 in Switzerland. With their insulating and absorption capabilities green roofs offer tremendous benefits to building owners by lowering heat and cooling costs, reducing storm water run off and providing an area for people to enjoy in crowded concrete metropolitan areas. This concept quickly spread through multiple European and South American countries, eventually making its way to the US. One of the first Green Roof applications noted in the US was in New York City in 1936 at Rockefeller Center. Once the benefits were realized, Green Roofs started appearing abundantly in many US cities. From single family dwellings to commercial and governmental buildings, Green Roofs offered many benefits in areas that would not normally have the opportunity to enjoy foliage and wildlife in a city atmosphere.

### Mini Case Study

In 2005, Ohio Gratings was contacted by the ASLA (American Society of Landscape Architects) to discuss the option of using a bar grating product for a portion of the walking surface on their Green Roof design for the headquarters building in Washington DC (*pictured above right*). The architectural firm decided to transform the 3,000 sq.ft. rooftop into an area to educate the public about the importance of green roofs in metropolitan areas. Michael Van Valkenburgh Landscape Architects and DMJM Architects selected OGi's aluminum I-bar



grating (19SGI4 1" x 3/16") with a SlipNot® slip resistant surface for 60% of the rooftop. This material allowed for a secure walking surface for pedestrians while allowing for multiple varieties of sedum to be planted beneath to grow and flourish due to the open area design.

## KWIK FACTS

- 1 Available in aluminum, carbon and stainless steel
- 2 **Materials Reuse:**  
**Pre Consumer Recycled Scrap:** minimum 10%  
**Post Consumer Recycled Scrap:** minimum 40%
- 3 Can be used in industrial or architectural applications
- 4 Eligible for LEED Credits

# CASE STUDY

## THE HIGH LINE: NEW YORK, NY

For over 40 years the High Line was used to transport meat and produce to local warehouses in New York City. This railroad line was 30 feet above street level and finally closed in 1980. In 1999 Friends of the High Line was founded to bring awareness of the potential to use this abandoned line as a park and in 2006 held a ground breaking ceremony to begin construction after years of negotiations with federal and local governmental agencies.

Along the walkway Ohio Gratings provided several areas of ADA compliant stainless steel and aluminum bar grating designed to meet the specialty requirements of the architect and owners of the project. The High Line offers various points of interest along the walkway as a result of its elevated vantage point and includes benches, flowers and foliage and nicely landscaped areas.

### Pedestrian Grating used in Phase I

1200 sq. ft. 7-SGSS-2 stainless steel (316 alloy) used for trenches & under benches

1100 sq. ft. 7-SG-4 aluminum swaged grating with SlipNot slip resistance for a ramp area

*SlipNot® is registered trademark with WS Molnar Company. AlGrip™ is a trademark of Ross Technologies.*

### Wheels n' Heels® InVent Grating used in Phase II

6300 sq. ft. 64-7WHSS-63 Stainless Steel with AlGrip™ slip resistant surface was used for the "Flyover and the 30th Street Cutout"

This product was used for its ability to support maintenance vehicles that maintain the High Line and also supported the ADA compliance requirement for the walkway.

The park was open to the public in June of this year.



### Project Overview: The High Line - New York City, NY

#### OGi Customer

Kiska Construction (Phase I) & CAC Industries (Phase II)

#### Project Owner

NYC Economic Development Corp/Friends of the High Line ([www.thehighline.org](http://www.thehighline.org))

#### Architectural Firms

James Corner Field Operations and Diller Scofidio + Renfro

# Designer Showcase:

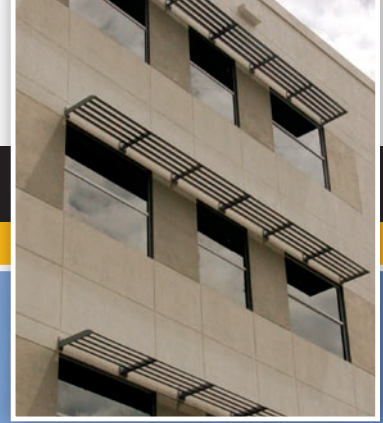
## SunShades

### Features & Benefits:

- Custom sizes to fit any application
- Individual components to complete systems available
- Manufactured from aluminum and carbon and stainless steel
- Various spacing configurations available
- Multiple finish options available
- Eligible to earn LEED Credit points



*Call us at 800-321-9800 today for additional information!*



## OHIO GRATINGS, INC.

5299 Southway Street SW  
Canton, OH 44706  
[www.ohiogratings.com](http://www.ohiogratings.com)