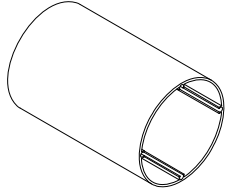
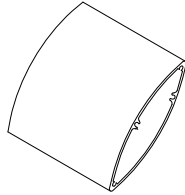


BLADES



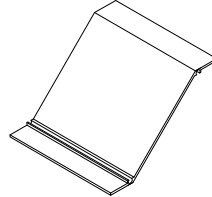
Round

Sizes: 1", 2", 3", 4"
Maximum Length: 12'



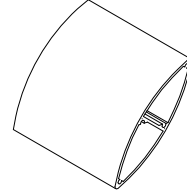
Airfoil

Sizes: 4", 6", 8"
Maximum Length: 12'



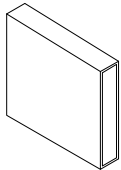
Z-Blade

Sizes: 4", 6"
Maximum Length: 12'



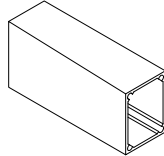
Longspan Airfoil

Sizes: 4", 6", 8"
Maximum Length: 16'



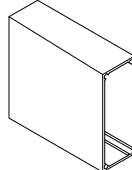
Flat

Sizes: 1/2" x 1" - 4"
Maximum Length: 12'



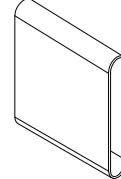
Square

Sizes: 2" - 8"
Maximum Length: 12'



Rectangular

Sizes: 1", 4" x 2" - 8"
Maximum Length: 12'



Shutter

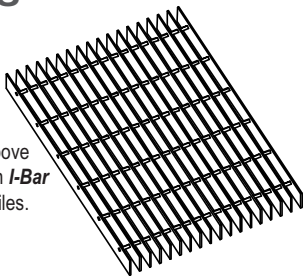
Sizes: 1/2" x 1" - 4"
Maximum Length: 12'

SCREENS

16 BarScreen

Solar Block up to 66° above horizon. Also available in *I-Bar* and *LiteBarScreen* profiles.

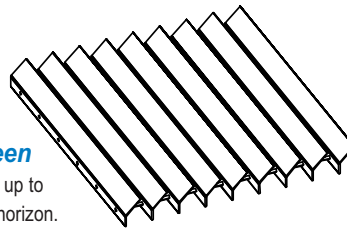
- ▶ up to 4' Width
- ▶ up to 12' Length



VisiScreen

Solar Block up to 66° above horizon.

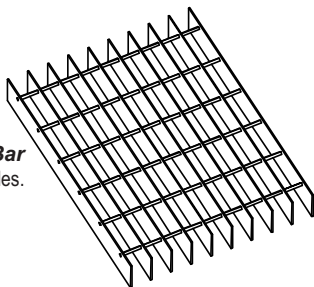
- ▶ up to 4' Width
- ▶ up to 12' Length



32 BarScreen

Solar Block up to 58° above horizon. Also available in *I-Bar* and *LiteBarScreen* profiles.

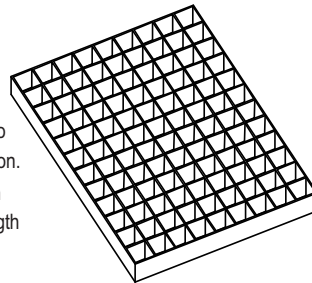
- ▶ up to 4' Width
- ▶ up to 12' Length



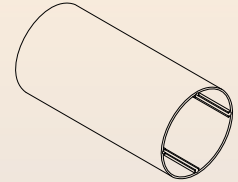
Egg-Crate

Solar Block up to 62° above horizon.

- ▶ up to 4' Width
- ▶ up to 12' Length

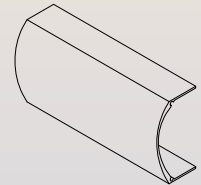


FASCIA



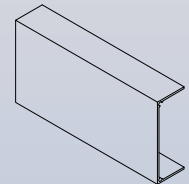
Round Tube

Sizes: 3" - 6"
Maximum Length: 12'



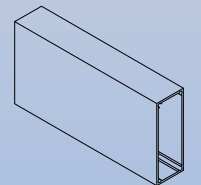
Bullnose

Sizes: 4" & 6"
Maximum Length: 12'



Channel

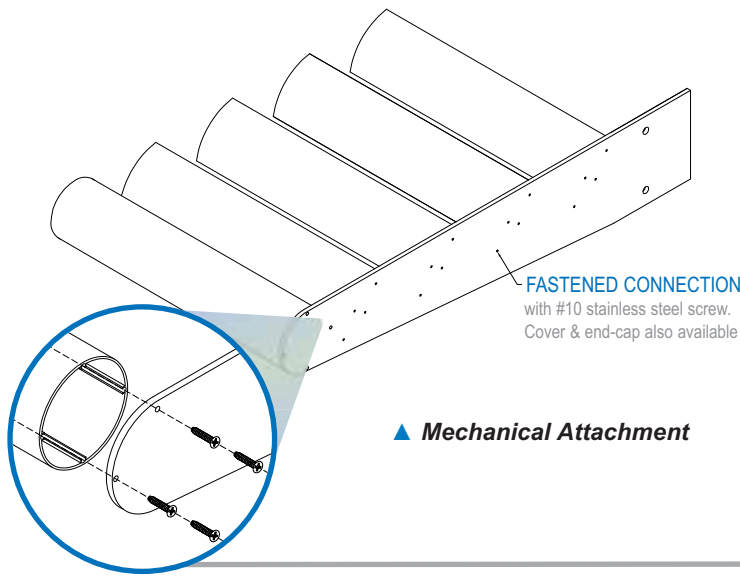
Sizes: 4" & 6"
Maximum Length: 12'



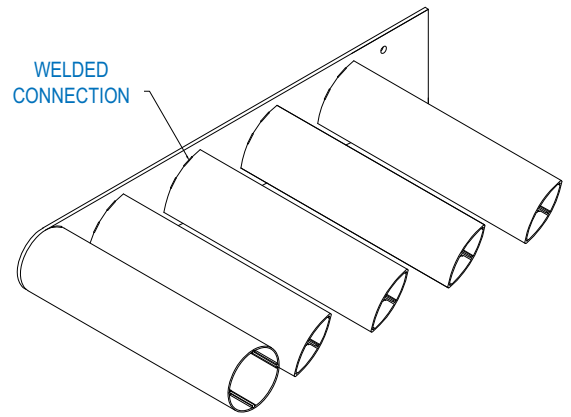
Rectangular Tube

Sizes: 1" x 4" & 2" x 6"
Maximum Length: 12'



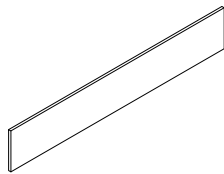


▲ Mechanical Attachment

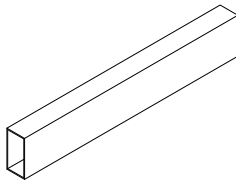


▲ Welded Attachment

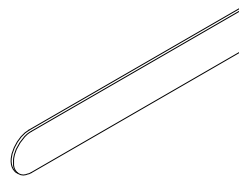
OUTRIGGERS



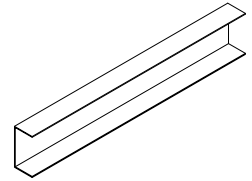
Rectangular Plate



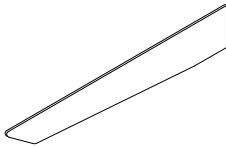
Rectangular Tube



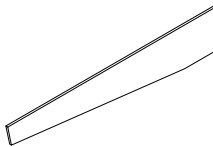
Round Plate



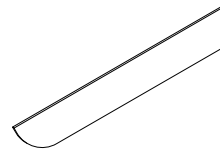
Channel



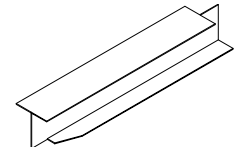
Tapered Plate



Angular Plate

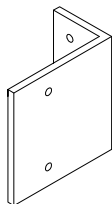


Half Round Plate

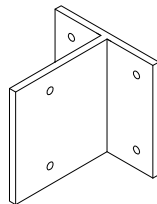


Flat Iron

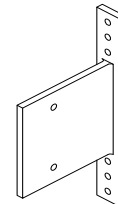
BRACKETS



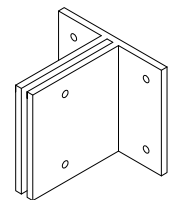
End Line



In-Line Wall



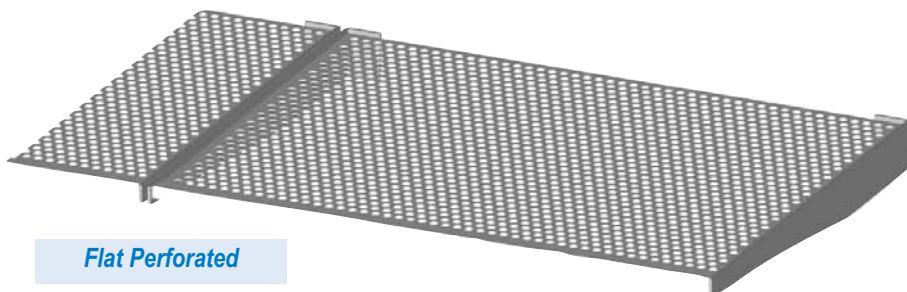
Curtain Wall



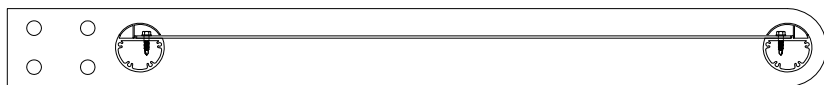
In-Line Sleeve



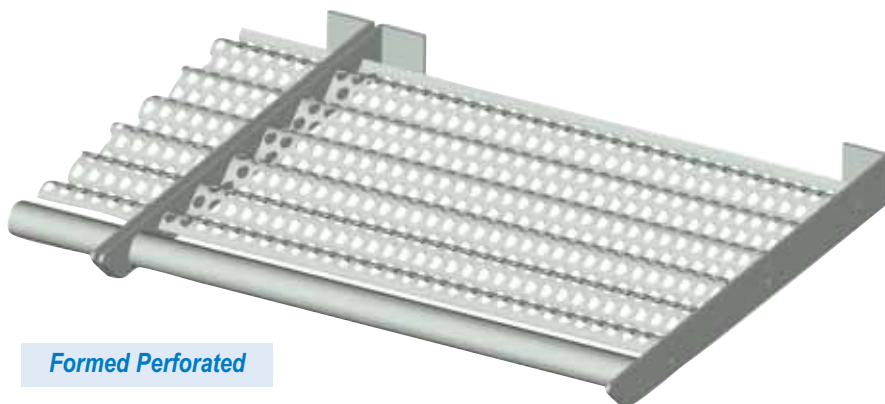
PERFORATED



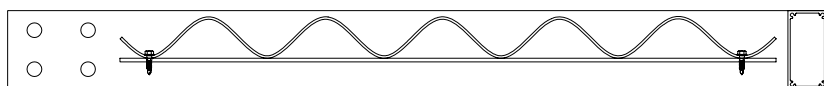
Flat Perforated



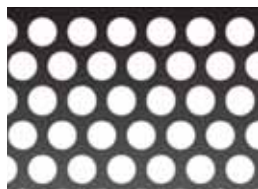
Flat Sheet with Integrated Trim ▲



Formed Perforated



Formed Sheet with Mounting Shelf ▲



50-1116-RD

- ▶ 1/2" Round
- ▶ 47% Open Area



25-38-RD

- ▶ 1/4" Round
- ▶ 40% Open Area



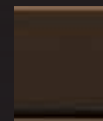
125-316-RD

- ▶ 1/8" Round
- ▶ 40% Open Area

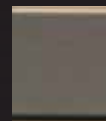
ANODIZED FINISHES



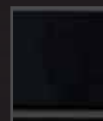
Clear



Med. Bronze



Champagne



Black

PAINT COLORS



Sage
(RAL 6013)



Green
(RAL 6002)



Blue
(RAL 5007)



Red
(RAL 3016)



Black
(RAL 8022)



Gray
(RAL 7015)



Almond
(RAL 8000)



White
(RAL 9016)

OGi also offers over 300 RAL, Newlar / Kynar / Durnar & powder paints. Contact OGi for additional information.

